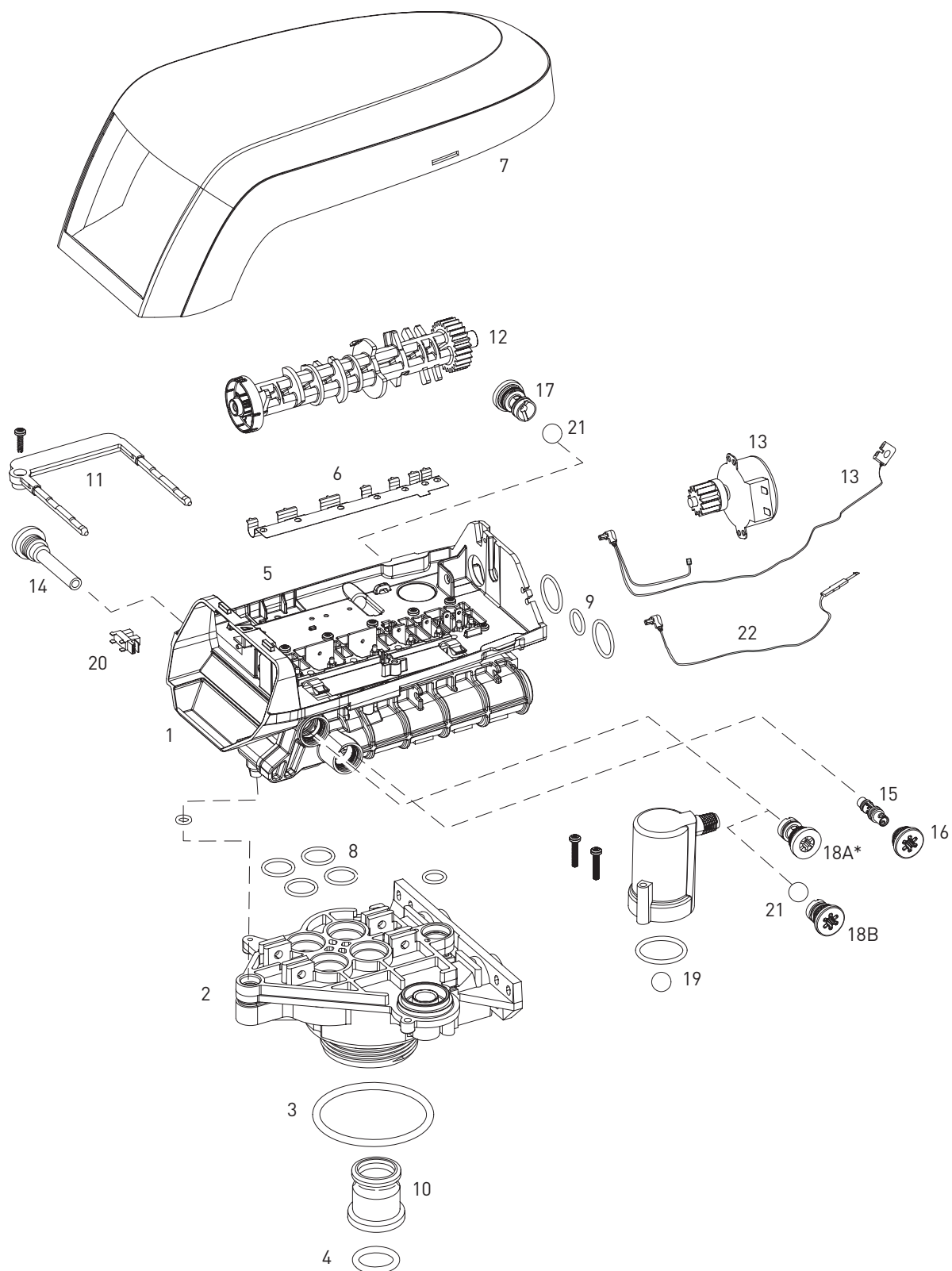


255 VALVE EXPLODED VIEW



⚠ WARNING: Do not use flow control ball with #18A.

255 VALVE EXPLODED VIEW *CONTINUED*

Item No.	QTY	Part No.	Description	Item No.	QTY	Part No.	Description
1	1	1244650	255 Valve Assembly, w/o Flow Controls	15	1		Injector (High Efficiency) Options:
2	1	1033784	255 Tank Adapter New Style			1035730	"E" Injector (High Efficiency) - Yellow (6-inch tank)
3	1	1010154	O-Ring EPDM			1035731	"F" Injector (High Efficiency) - Peach (7-inch tank)
4	1	1232370	O-Ring EP			1035732	"G" Injector (High Efficiency) - Tan (8-inch tank)
5	1	1235340	Top Plate, 255 Valve, Logix Series Controller			1035733	"H" Injector (High Efficiency) - Lt Purple (9-inch tank)
6	1	1235341	Spring, One Piece, 255 Valve			1035734	"J" Injector (High Efficiency) - Lt Blue (10-inch tank)
7	1	1236246	Cover, Valve, 255/Performa, 700/860 Series Controller			1035735	"K" Injector (High Efficiency) - Pink (12-inch tank)
8	1	1001404	O-ring Kit: Tank Adapter			1035736	"L" Injector (High Efficiency) - Orange (13 - 14-inch tank)
9	1	1040459	O-ring Kit: Piping Boss	16	1	1000269	Injector Cap with O-ring
10	1	1001986	13/16 inch Rubber Insert (Optional)	17	1		Drain Control Assembly with O-ring:
*	1	1000250	Valve Disk Kit - Standard			1000209	No. 7 (1.3 gpm; 4.9 Lpm)
*	1	1239760	Blending Valve Kit 900/700 Series			1000210	No. 8 (1.7 gpm; 6.4 Lpm)
11	1		Locking Bar			1000211	No. 9 (2.2 gpm; 8.3 Lpm)
		1031402	English Language Locking Bar			1000212	No. 10 (2.7 gpm; 10.2 Lpm)
		1031403	French Language Locking Bar			1002130	No. 12 (3.9 gpm; 14.76 Lpm)
		1031404	German Language Locking Bar			1000214	No. 13 (4.5 gpm; 17 Lpm)
		1031405	Italian Language Locking/Bar			1000215	No. 14 (5.3 gpm; 20 Lpm)
		1031406	Japanese Language Locking Bar	18A	1	1000222	Regenerant Refill Controller, No Ball, 0.33 gal
		1031407	Spanish Language Locking Bar	18B		1243510	Regenerant Refill Controller
		1006093	Locking Bar Screw - No. 8-9/16 inch	19	1		Air Check Kit
12	1		Camshaft Options:			1032416	Air Check Kit 3/8-inch male
		1235353	Cam 255/700-860 Series Valve, STD, Black			1032417	Air Check Kit 1/4-inch male
		1236251	Cam 255/700-860 Series Valve, TWIN, Tan (insert)	20	1	1235373	Module, Sensor, Photo Interrupter
13	1	1235361	Motor/Optical Cable Assembly	21	1	1030502	Ball, Flow Control
14	1	1000226	Screen/Cap Assembly w/ O-ring	*	1	1033066	New to Old Style Aircheck Adapter
				22	1	1235446	Turbine Cable
				*		1233187	Motor Locking Pin
				*		1244336	Chlorine Generator Kit, 0.33 gpm
				*		1242411	Extension Cord for Cabinet
				*		1239711	Service Kit, Front Mount, 0.1 amp
				*		1239752	Service Kit, Front Mount, 5 amp
				*		1239753	Service Kit, Top Plate Mount, 0.1 amp
				*		1239754	Service Kit, Top Plate Mount, 5 amp
				*		1239979	Cable Harness, Remote Regen 742

*Not Shown

255 VALVE EXPLODED VIEW *CONTINUED*

Item No.	QTY	Part No.	Description
*			Piping Boss Kit (includes hardware):
		1040277	3/4-inch NPT, Brass 3/8-inch NPT Drain
		1040278	1-inch NPT, Brass 1/2-inch NPT Drain
		1040281	3/4-inch BSPT, Brass 3/8-inch BSPT Drain
		1040282	1-inch BSPT, Brass 1/2-inch BSPT Drain
		1040279	3/4-inch NPT, Plastic 1/2-inch NPT Drain
		1040280	1-inch NPT, Plastic 1/2-inch NPT Drain
		1040283	3/4-inch BSPT, Plastic 1/2-inch BSPT Drain
		1040284	1-inch BSPT, Plastic 1/2-inch BSPT Drain
*	1	1040339	Piping Boss Installation Kit
*	1	1032350	Kit, Meter Adapter
*	1	1032351	Meter Install Kit
*	1		Bypass Valve
		1040769	Bypass Body Assembly with Install Kit
		1040524	Bypass Installation Kit

Tube Adapter Kits

*	1	1001606	3/4-inch Copper Tube Adapter Kit
*	1	1001670	1-inch Copper Tube Adapter Kit
*	1	1001608	22-mm Copper Tube Adapter Kit
*	1	1001613	3/4-inch CPVC Tube Adapter Kit
*	1	1001614	1-inch CPVC Tube Adapter Kit
*	1	1001615	25-mm CPVC Tube Adapter Kit
*	1	1001769	3/4-inch NPT Plastic Pipe Adapter Kit
*	1	1001603	1-inch NPT Plastic Pipe Adapter Kit
*	1	1001604	3/4-inch BSPT Plastic Pipe Adapter Kit
*	1	1001605	1-inch BSPT Plastic Pipe Adapter Kit
*	1	1001610	1-inch NPT Brass Pipe Adapter Kit
*	1	1001612	1-inch BSPT Brass Pipe Adapter Kit

*Not Shown